

# Assembly Instructions

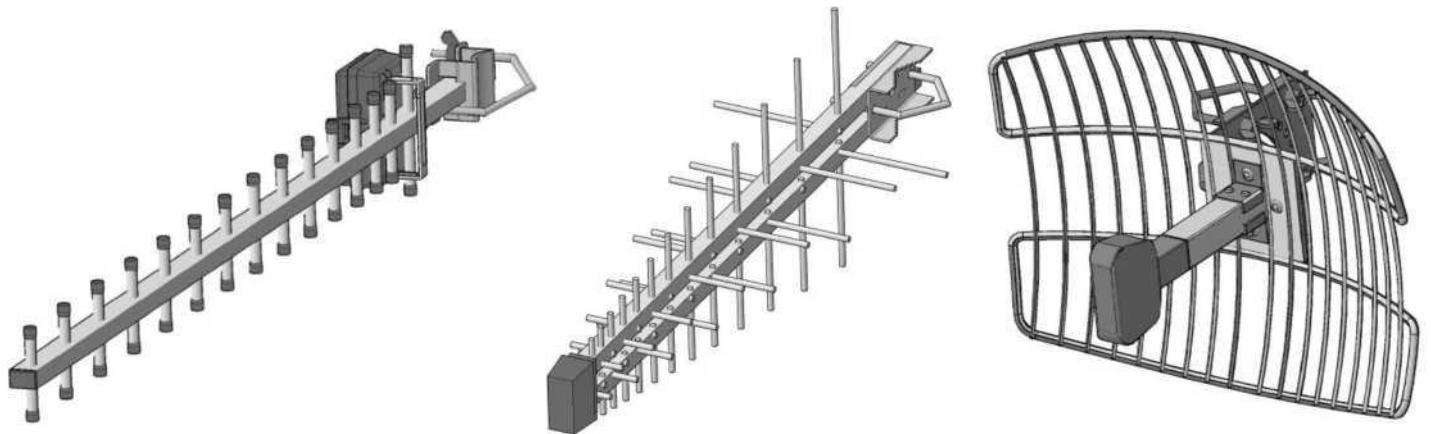
LTE800-20

LTE-800-2200-YAGI

WIFIEXT



## Featured LTE and Wi-Fi aerials



LTE800-20

LTE-800-2200-YAGI

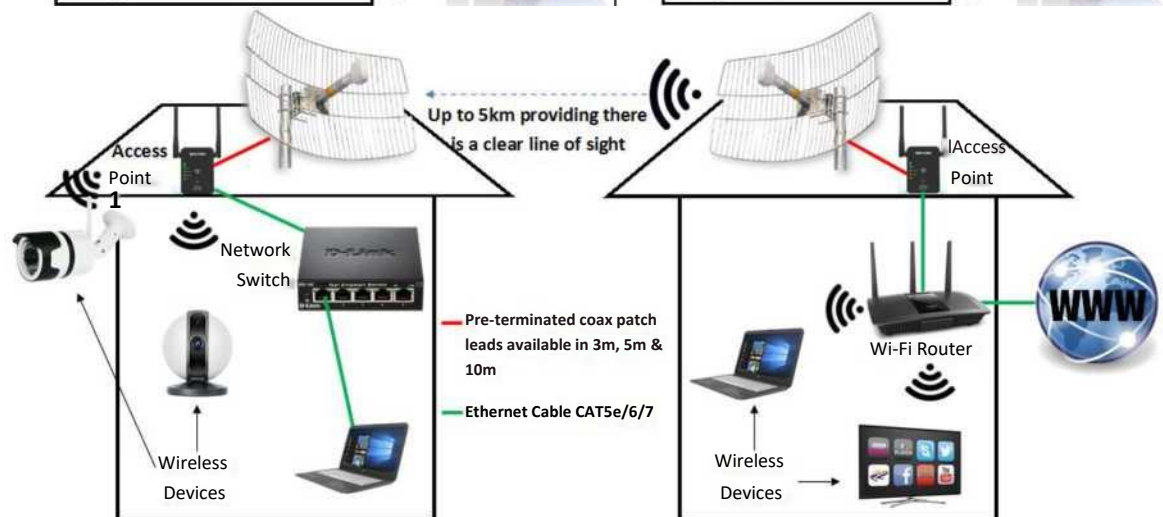
WIFIEXT

## Diagrams

LTE800-20 4G LTE Yagi Aerial (1710-1880 MHz)



LTE-800-2200 MIMO Yagi Aerial (800-2170MHz)



WIFIEXT- External Parabolic Wireless Wi-Fi Aerial

# Assembly Instructions

**LTE800-20**

**LTE-800-2200-YAGI**

**WIFIEXT**



- Our range of aerials have been designed to improve the reception of both LTE mobile communications and Wi-Fi signals.
- The aerials receive GSM/DCS/UMTS/HSDPA/LTE/Wi-Fi signals.
- Both the LTE and Wi-Fi versions plug in to replace the standard aerial in the 4G repeater or Wi-Fi router.
- The aerials are complete with an integral high quality LMR200 50 Q cable terminated with an SMA connector (cable extensions available, see table at the bottom of the page).
- Log-periodic designs are pre-assembled with integrated elements.
- Very flat response at all operating frequencies ensuring high performance.
- All of our high-quality aerials are constructed from aluminum alloy with weather resistant, UV stable plastics, and light-weight for ease of fitting. Also, with low cross section to reduce wind loading.

Model	LTE800-20	LTE-800-2200-YAGI	WIFIEXT
Channel bandwidth	1800 MHz	800-2200 MHz	2,4 and 5,8 GHz
Cable Length	1m	10m	1m
Connector	RP-SMA	SMA x 2	RP-SMA
Impedance	50 Q		
Antenna gain Max.	16 dBi	10 dBi	12.5 dBi
Front-to-back ratio	> 22 dB		
Beam width H/V	60° / 80°		
Size (packed)	800 mm	600 mm	400 x 300 mm

## Fix the aerial

Fix the aerial to a suitable mast using the appropriate clamp assembly as shown. Check that all fixings are tight.

## Aerial Position

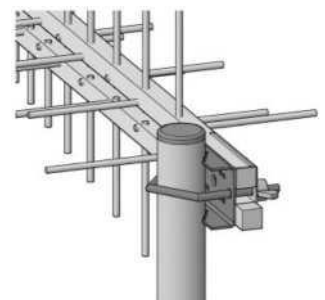
The aerials will provide good reception in most locations when mounted in a clear outdoor position. However, reception in weaker signal areas may require the use a taller mast.

## Cable Extensions -Patch Leads

In some cases, the cable length will need to be extended to reach the router. To do this use a patch lead, which are available in 3m, 5m and 10m lengths.

## Connect to the Wi-Fi/LTE Router

Disconnect the router's standard 'stub' aerial and replace with the cable from the aerial with the SMA connection. Note to check whether the centre pin is needed or not. If so, then use a PROCON80 adapter. Try to keep cable length to a minimum as you will incur substantial losses if you extend the cable beyond the pre-connected length.



Model	Description
<b>PROLMRSMA030M</b>	LMR200 50 Q RF Coax Cable 3m Patch Lead SMA Female to SMA RP Female.
<b>PROLMRSMA050M</b>	LMR200 50 Q RF Coax Cable 5m Patch Lead SMA Female to SMA RP Female.
<b>PROLMRSMA100M</b>	LMR200 50 Q RF Coax Cable 10m Patch Lead SMA Female to SMA RP Female.
<b>PROLMRSMARP030M</b>	LMR200 RF Coax Cable 3m Patch Lead SMA RP Female Jack to SMA RP Male Plug.
<b>PROLMRSMARP050M</b>	LMR200 RF Coax Cable 5m Patch Lead SMA RP Female Jack to SMA RP Male Plug.
<b>PROLMRSMARP100M</b>	LMR200 RF Coax Cable 10m Patch Lead SMA RP Female Jack to SMA RP Male Plug.