

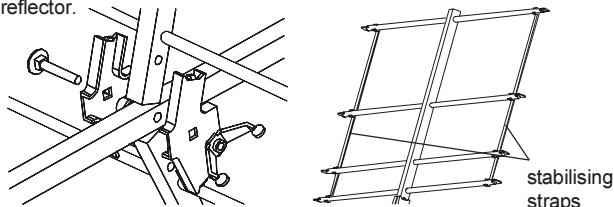
Assembly and Fitting guide

DMX10



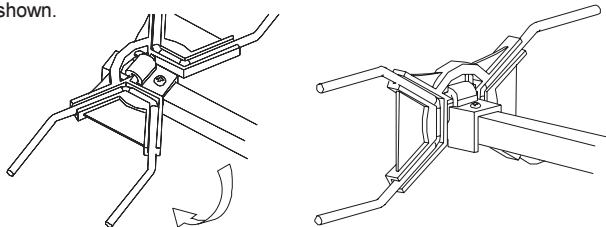
1. Fit reflector sections aerial to boom

Loosen clamp wing nut but do not remove. Insert both reflector sections as shown. Ensure locating lugs on clamp fit into mating holes in reflector booms. Tighten wing nut securely. Fit plastic stabilising straps to each reflector.



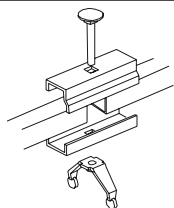
2. Position elements

Rotate and snap the X-shaped director elements into a vertical position as shown.



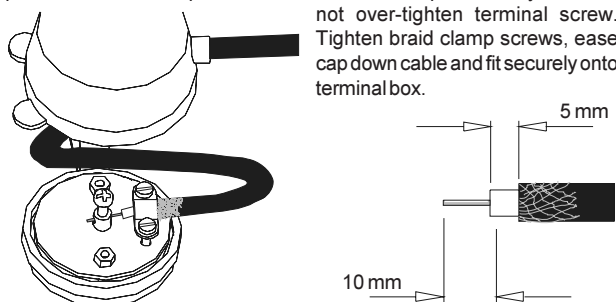
3. Main mast/boom clamp

Join the two main boom sections with the plastic plugs at the front and rear ends of the aerial. Loosen but do not remove the wing nut on the boom coupler. Join the two uncapped boom ends as shown ensuring that the ends are as close together as possible (allowing room for the coupler bolt). Tighten the wing nut securely.



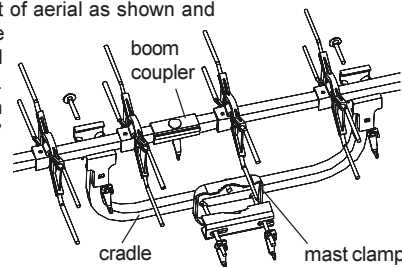
4. Fit coaxial cable

Remove cover from terminal box and push cable through aperture. Do not enlarge hole as this may allow water ingress. Trim off approximately 15 mm of the outer cable sheath with a craft knife or similar to expose braid (and foil if double screened). Fold braid back over sheath (cut away foil flush to outer sheath) to expose plastic dielectric. Cut away dielectric to leave 10 mm of the centre copper wire exposed. Loosen clamp screws, slide cable under clamp and push centre wire through hole in terminal post. Braid should be positioned underneath clamp but not beyond it. Do not over-tighten terminal screw. Tighten braid clamp screws, ease cap down cable and fit securely onto terminal box.



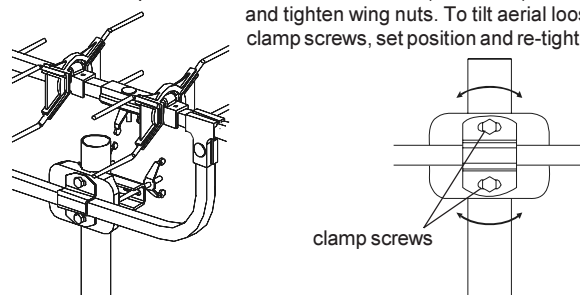
5. Fit mounting cradle to aerial

Loosen and spread clamps on pre-assembled cradle. Position cradle on booms at balance point of aerial as shown and tighten wing nuts (the diagram shows aerial horizontally polarised). For vertical polarisation rotate cradle through 90° in mast clamp.



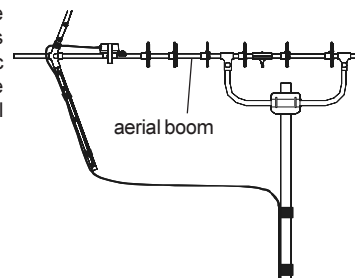
6. Fit aerial to a mast

Slide mast clamp over a suitable mast 1¼" – 1½" (32-38 mm) diameter and tighten wing nuts. To tilt aerial loosen clamp screws, set position and re-tighten.



7. Recommended cable route

For best aerial performance the cable should be routed as shown and secured with pvc tape (not supplied). The cable should not touch the aerial boom.



Kit Contents

- 1 - Aerial boom with arrow plate attached.
- 1 - Aerial boom elements only.
- 1 - Dipole and cap.
- 4 - Plastic reflector straps
- 1 - Cradle and mast clamp.
- 2 - Reflector sections.

Safety

Working at height - carry out work outdoors at height only if you are competent in the use of ladders and related access equipment. Always work safely within your own limitations, ensuring that all equipment used is appropriate and is in good condition.

Further advice may be downloaded from:
www.blake-uk.com/downloads on the following:

- reception problems
- fitting coaxial connectors
- distributing TV signals around the home
- general recommendations

Reception Advice Services

BBC Reception Advice 08700 100123
 e-mail: reception@bbc.co.uk
 web: www.bbc.co.uk/reception
 Ofcom Engineering Information
 web: www.ofcom.org.uk/static/reception_advice/index.asp